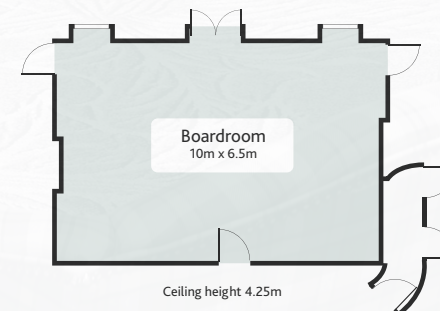
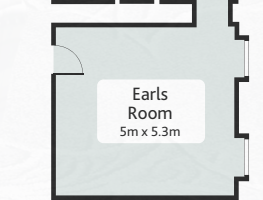
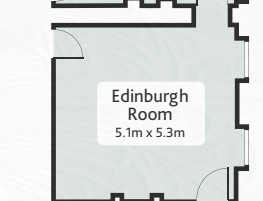
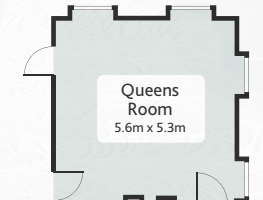
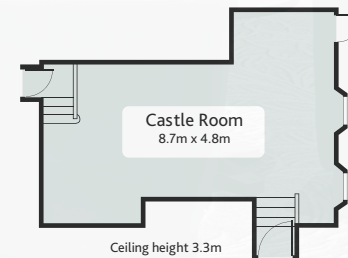
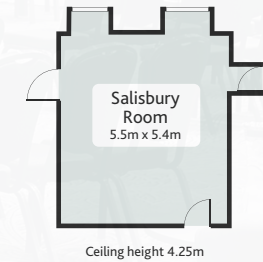
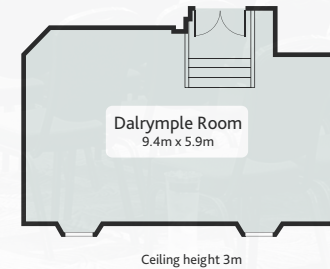
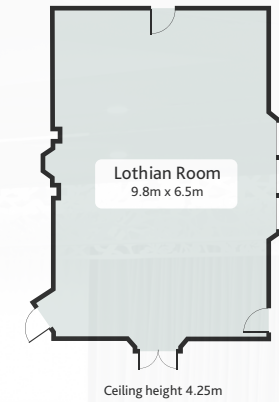
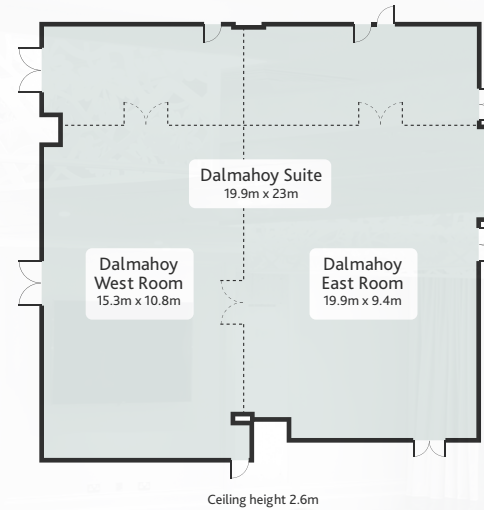


# DALMAHOY FUNCTION ROOMS

## Features, Dimensions and Capacity

MEETING ROOM	Dalmahoy Suite	Dalmahoy West	Dalmahoy East	Lothian	Boardroom	Dalrymple	Castle	Salisbury	Edinburgh	Earls	Queens
<b>Features</b>											
Natural Daylight	✓	✓		✓	✓	✓	✓	✓	✓	✓	✓
Air Conditioning	✓	✓	✓	✓							
Wheelchair Access	✓	✓	✓	✓	✓			✓	✓	✓	✓
<b>Dimensions (Metres)</b>											
Length	19.9	15.3	19.9	9.8	10	9.4	8.7	5.5	5.1	5	5.6
Width	23	10.8	9.4	6.5	6.5	5.9	4.8	5.4	5.3	5.3	5.3
Height	2.6	2.6	2.6	4.25	4.25	3	3.3	4.25	4.25	4.25	4.25
<b>Capacity</b>											
<b>Theatre Style</b>											
(Front Projection)	260	100	100	50	40	30	16	-	-	-	-
(Back Projection)	240	80	80	-	-	-	-	-	-	-	-
<b>Boardroom Style</b>											
U-Shape	-	40	40	24	24	16	10	-	-	-	-
<b>Classroom Style</b>											
(Front Projection)	120	50	50	30	25	12	12	-	-	-	-
(Back Projection)	100	40	40	-	-	-	-	-	-	-	-
<b>Cabaret Style</b>											
(Front Projection)	160	60	60	35	25	20	12	-	-	-	-
(Back Projection)	140	40	40	-	-	-	-	-	-	-	-
<b>Buffet Reception</b>	300	120	120	50	40	30	20	-	-	-	-
<b>Dinner</b>	300	80	80	50	40	30	20	-	10	10	10
<b>Dinner/Dance</b>	250	-	-	-	-	-	-	-	-	-	-



For more information please contact our  
Conference & Events Co-ordinator  
t: 44 (0) 131 333 1845

e: [conferenceandevents@dalmahoyhotelandcountryclub.co.uk](mailto:conferenceandevents@dalmahoyhotelandcountryclub.co.uk)